



**Site plan training hall  
Halle11  
Brüggenstrasse 1 / 3, 8932 Mettmenstetten**

**Please park your cars at the Park & Ride (P & Rail) Grindel  
1, 8932 Mettmenstetten**

**To pay for the parking you have to download the P + Rail app.**

**Coming from Mettmenstetten:** In direction of Uttenberg / Knonau / Maschwanden on Bahnhofstrasse. Cross the train track and turn right immediatly after.

**Coming from Obfelden, Maschwanden, Uttenberg:** In direction of Mettmenstetten turn left just before the railroad crossing.

The park & ride (park & rail) parking lot is located directly on the right after turning into the direction of Grindel 1.



Parking Park & Ride (P & Rail)

Please walk from there. Turn right from the parking lot (in direction of the industrial area) and continue straight ahead.



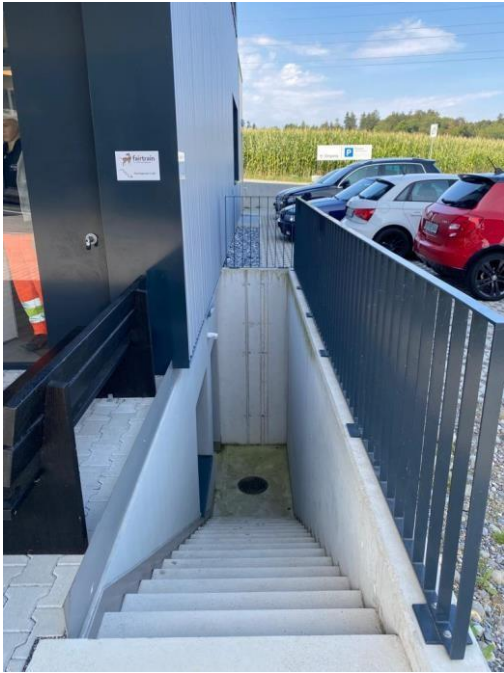
At the building of Inglin Transporte continue left up the street.



Walk to the building Halle11.



The entrance to the training hall is downstairs, in the basement.



Note: You will not find the Brüggenstrasse in the navigation systems (it does not exist yet officially) hence, please follow the site plan.

If you can't find us, please call your trainer:

Mumi	079 779 32 66
Prisca	079 626 66 23
Mischi	078 737 70 13
Dominique	079 833 51 30
Fabienne	076 480 69 78
Nicole	076 440 99 80
fairtrain administration	079 941 87 89